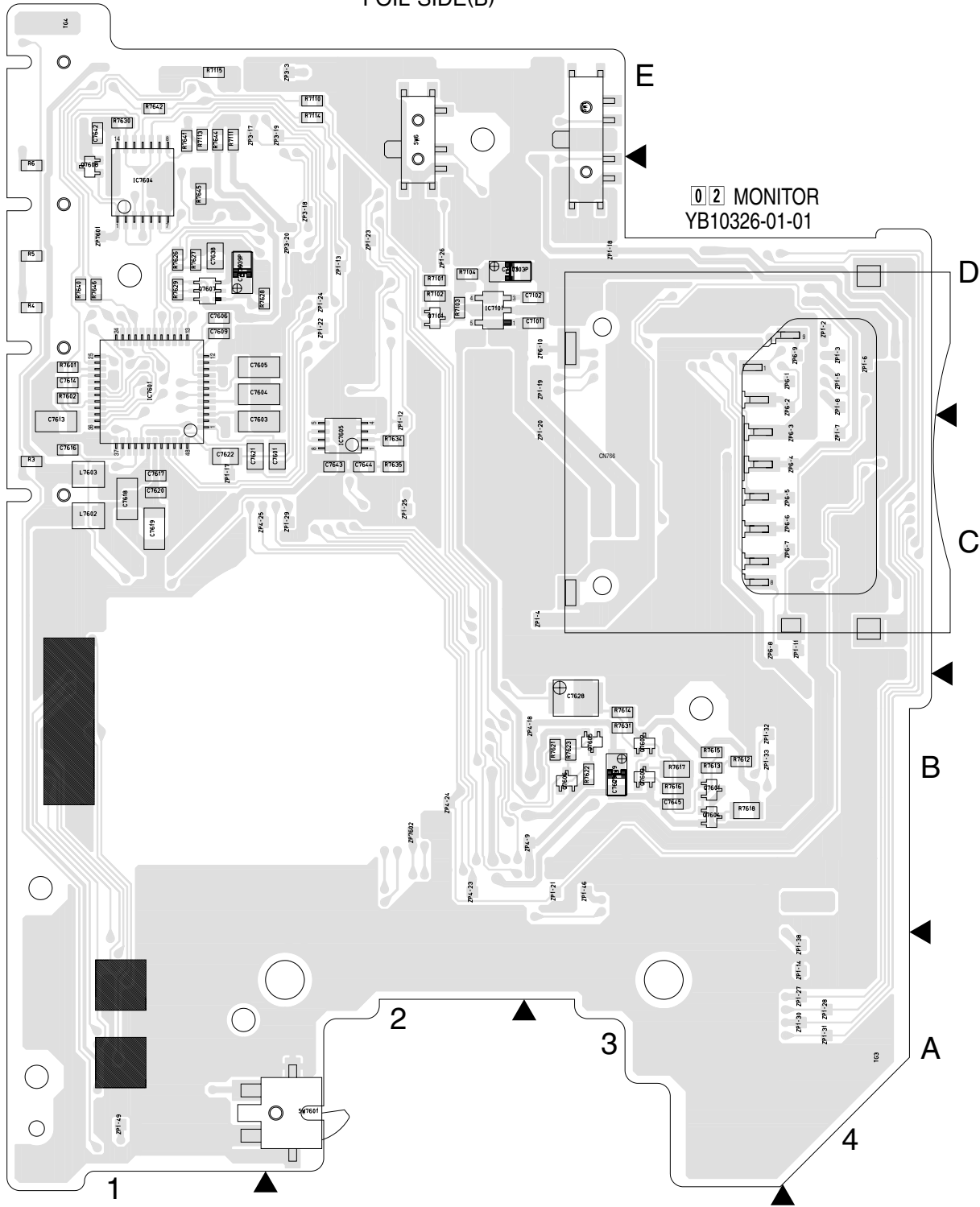


**SECTION 4**  
**CHARTS AND DIAGRAM**

# 4.1 MONITOR CIRCUIT BOARD

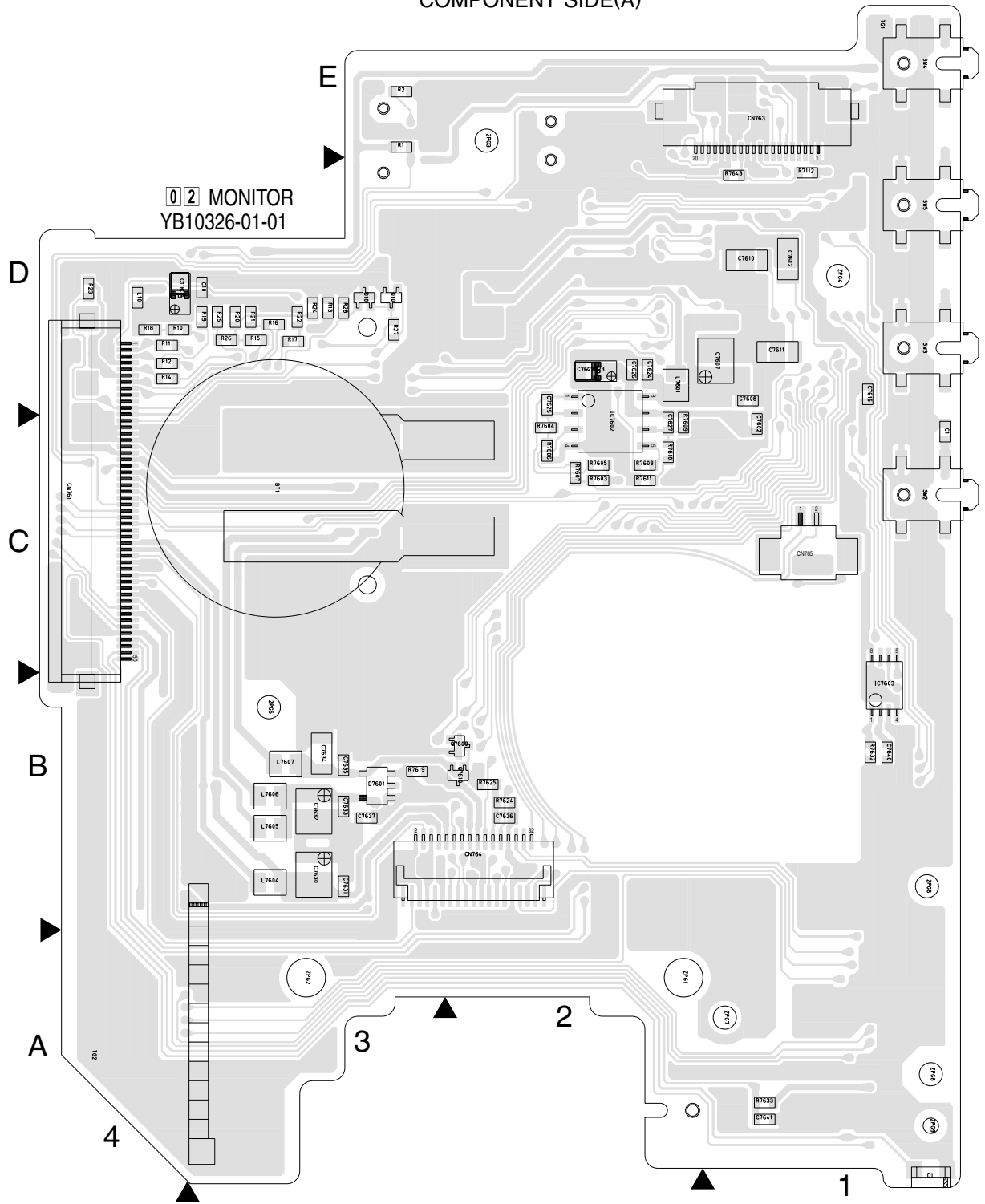
FOIL SIDE(B)



COMPONENT PARTS LOCATION GUIDE < MONITOR >

REF.NO.	LOCATION	REF.NO.	LOCATION	REF.NO.	LOCATION	REF.NO.	LOCATION	REF.NO.	LOCATION	REF.NO.	LOCATION	REF.NO.	LOCATION	REF.NO.	LOCATION	REF		
<b>CAPACITOR</b>																		
C1	A C 1C	C7609	B C 1D	C7624	A C 2D	C7639	B C 1D	<b>DIODE</b>				L7602	B C 1C	Q7607	B C 1D	R14	A C 4D	R71
C10	A C 3D	C7610	A C 1D	C7625	A C 2D	C7640	A C 1B	D1	A C 1A	L7603	B C 1C	Q7608	B C 1D	R15	A C 3D	R71		
C11	A C 3D	C7611	A C 1D	C7626	A C 2C	C7641	A C 1E	D10	A C 3D	L7604	A C 3B	Q7609	A C 2B	R16	A C 3D	R71		
C7101	B C 2D	C7612	A C 1D	C7627	A C 2C	C7642	B C 1A	D7601	A C 3B	L7605	A C 3B	Q7610	A C 2B	R17	A C 3D	R71		
C7102	B C 2D	C7613	B C 1C	C7628	B C 3B	C7643	B C 2C	<b>IC</b>				L7606	A C 3B	R18	A C 4D	R71		
C7103	B C 2D	C7614	B C 1D	C7629	B C 3B	C7644	B C 2C	IC7101	B C 2D	L7607	A C 3B	<b>RESISTOR</b>				R19	A C 3D	R71
C7601	B C 1C	C7615	A C 1D	C7630	A C 3B	C7645	B C 3B	IC7601	A C 1D	<b>TRANSISTOR</b>				R1	A C 3E	R20	A C 3D	R71
C7602	A C 1C	C7616	A C 1C	C7631	A C 3B	<b>CONNECTOR</b>				IC7602	A C 2B	Q10	A C 3D	R2	A C 3E	R21	A C 3D	R71
C7603	B C 1C	C7617	B C 1C	C7632	A C 3B	CN761	A C 4D	IC7603	A C 1C	Q7101	B C 2D	Q7601	B C 3B	R3	B C 1C	R22	A C 3D	R71
C7604	B C 1D	C7618	B C 1C	C7633	A C 3B	CN763	A C 1E	IC7604	B C 1D	Q7602	B C 3B	Q7603	B C 3B	R4	B C 1D	R23	A C 3D	R71
C7605	B C 1D	C7619	B C 1C	C7634	A C 3B	CN764	A C 3B	IC7605	B C 2C	Q7604	B C 3B	Q7605	B C 3B	R5	B C 1D	R24	A C 3D	R76
C7606	B C 1D	C7620	B C 1C	C7635	A C 3B	CN765	A C 1C	<b>COIL</b>				Q7606	B C 3B	R6	B C 1D	R25	A C 3D	R76
C7607	A C 1D	C7621	B C 1C	C7636	A C 3B	CN766	B C 4C	L10	A C 4D	Q7607	B C 3B	Q7608	B C 3B	R7	A C 3D	R26	A C 3D	R76
C7608	A C 1D	C7622	B C 1C	C7637	A C 3B					L7601	A C 2D	Q7609	B C 3B	R8	A C 4D	R27	A C 3D	R76
				C7623	A C 2D	C7638	B C 1D					Q7610	B C 3B	R9	A C 3D	R28	A C 3D	R76

COMPONENT SIDE(A)



NO.	LOCATION	REF.NO.	LOCATION	REF.NO.	LOCATION	REF.NO.	LOCATION	REF.NO.	LOCATION	REF.NO.	LOCATION	REF.NO.	LOCATION	REF.NO.	LOCATION		
01	B C 2D	R7606	A C 2C	R7622	B C 3B	R7641	B C 1E	SW3	A C 1D	ZP3-3	B C 2E	ZP1-17	B C 1C	ZP1-32	B C 3B	ZP7602	
02	B C 2D	R7607	A C 2C	R7623	B C 3B	R7642	B C 1E	SW4	A C 1E	ZP4-9	B C 2B	ZP1-18	B C 3D	ZP1-33	B C 3B	ZPG1	
03	B C 2D	R7608	A C 2C	R7624	A C 2B	R7643	A C 1D	SW5	A C 1D	ZP6-1	B C 3D	ZP1-19	B C 3D	ZP1-38	B C 4A	ZPG2	
04	B C 2D	R7609	A C 2C	R7625	A C 2B	R7644	B C 1E	SW6	A B C 2E	ZP6-2	B C 3C	ZP1-20	B C 3C	ZP1-46	B C 3B	ZPG3	
10	B C 2E	R7610	A C 2C	R7626	B C 1D	R7645	B C 1D	SW7601	B C 2A	ZP6-3	B C 3C	ZP1-21	B C 3B	ZP1-49	B C 1A	ZPG4	
11	B C 1E	R7611	A C 2C	R7627	B C 1D	R7646	B C 1D	TM1	A C 4A	ZP6-4	B C 3C	ZP1-22	B C 2D	ZP3-17	B C 1E	ZPG5	
12	A C 1D	R7612	B C 3B	R7628	B C 1D			TM3	A C 4E	ZP6-5	B C 3C	ZP1-23	B C 2D	ZP3-18	B C 2D	ZPG6	
13	B C 1E	R7613	B C 3B	R7629	B C 1D			OTHER	A C 4E	ZP6-6	B C 3C	ZP1-24	B C 2D	ZP3-19	B C 1E	ZPG7	
14	B C 2E	R7614	B C 3B	R7630	B C 1E	BT1	A C 3C	ZP1-2	B C 4D	ZP6-7	B C 3C	ZP1-25	B C 2C	ZP3-20	B C 2D	ZPG8	
15	B C 1E	R7615	B C 3B	R7631	B C 3B	C11P	A C 3D	ZP1-3	B C 4D	ZP6-8	B C 3C	ZP1-26	B C 2D	ZP4-18	B C 2B	ZPG9	
01	B C 1D	R7616	B C 3B	R7632	A C 1B	C7103P	A C 2D	ZP1-4	B C 3C	ZP6-9	B C 3C	ZP1-27	B C 4A	ZP4-23	B C 2B	ZPG9	
02	B C 1D	R7617	B C 3B	R7633	A C 1A	C7623P	B C 2D	ZP1-5	B C 4D	ZP1-11	B C 4C	ZP1-28	B C 4A	ZP4-24	B C 2B	ZPG9	
03	A C 2C	R7618	B C 3B	R7634	B C 3B	C7629P	B C 3B	ZP1-6	B C 4D	ZP1-12	B C 2C	ZP1-29	B C 2C	ZP4-25	B C 1C	ZPG9	
04	A C 2C	R7619	A C 3B	R7635	B C 2C	C7639P	B C 1D	ZP1-7	B C 4C	ZP1-13	B C 2D	ZP1-30	B C 4A	ZP6-10	B C 3D	ZPG9	
05	A C 2C	R7621	B C 3B	R7640	B C 1D	SW1	B C 3E	ZP1-8	B C 4C	ZP1-14	B C 4A	ZP1-31	B C 4A	ZP7601	B C 1D	ZPG9	
						SW2	A C 1C	ZP1-8									

## 4.2 LCD BL CIRCUIT BOARD

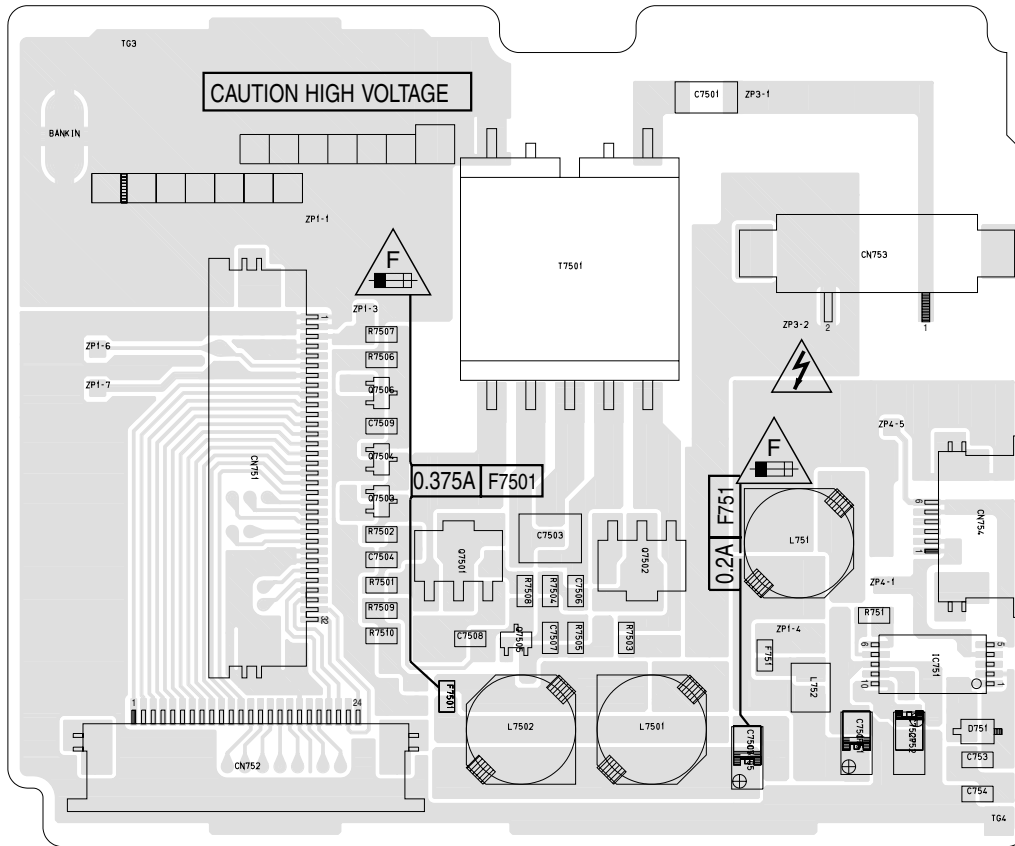


• CAUTION:  
FOR CONTINUED PROTECTION AGAINST  
FIRE HAZARD, REPLACE ONLY WITH SAME  
TYPE AND RATED FUSE(S).

• ATTENTION:  
POUR UNE PROTECTION PERMANENTE  
CONTRE LES RISQUE D'INCENDE,  
REPLACER LES FUSIBLES PAR UN AUTRE  
DE MEME TYPE ET DE MEME TENSION.

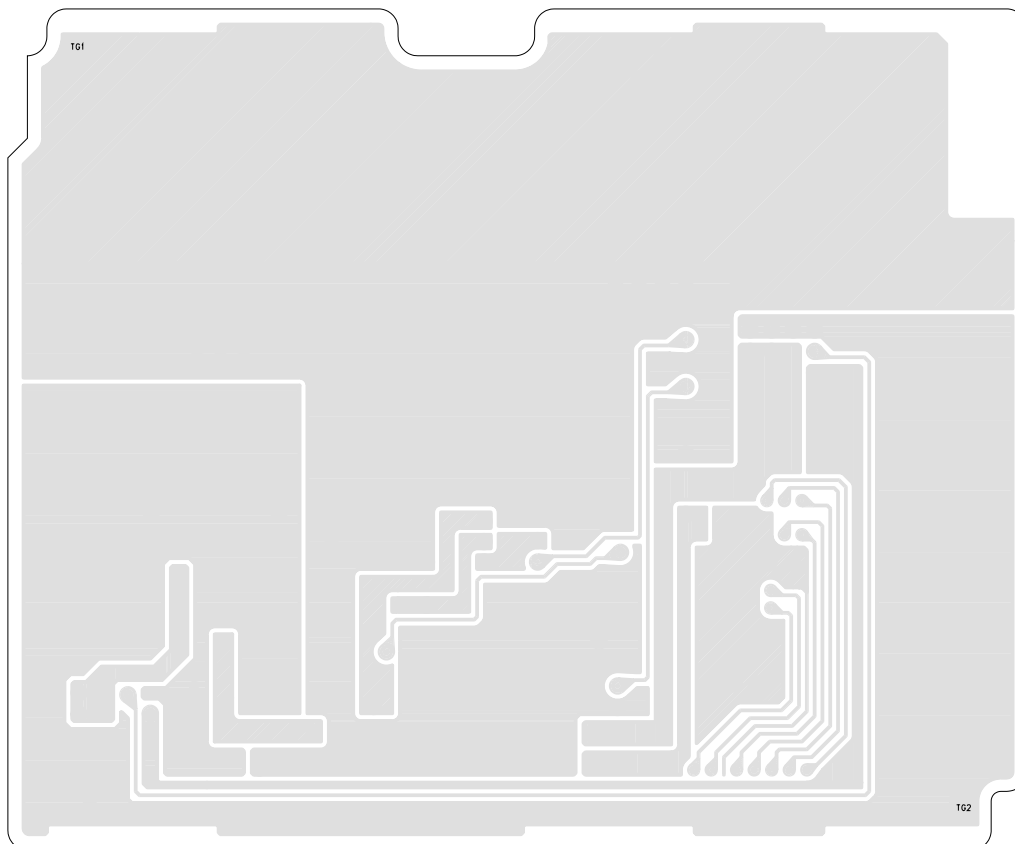
03 LCD BL  
YB10325

FOIL SIDE(B)



COMPONENT SIDE(A)

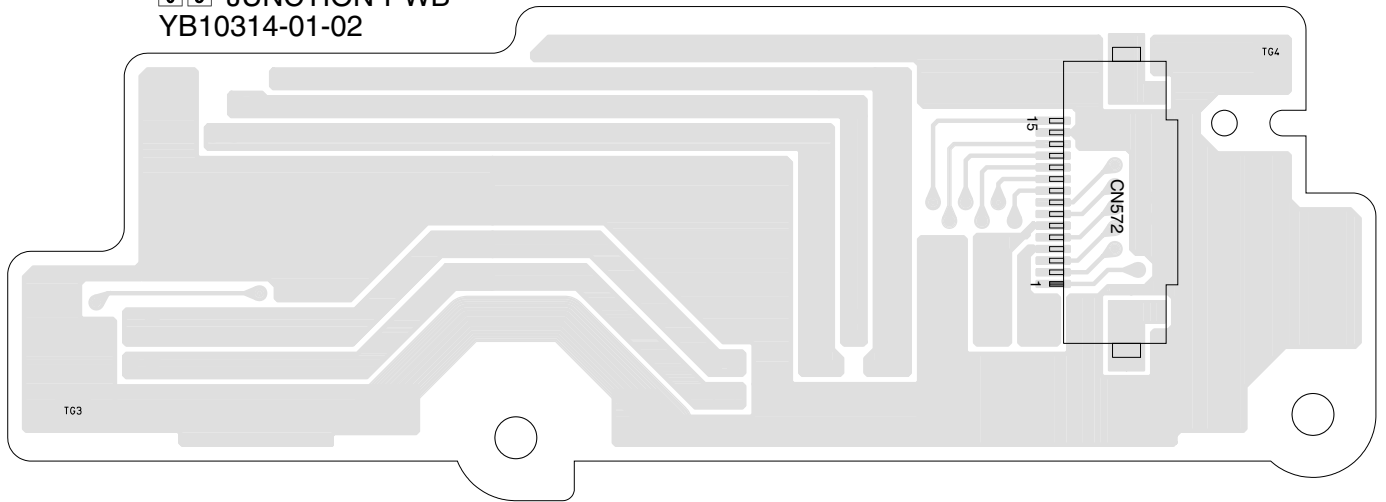
03 LCD BL  
YB10325



### 4.3 JUNCTION CIRCUIT BOARD

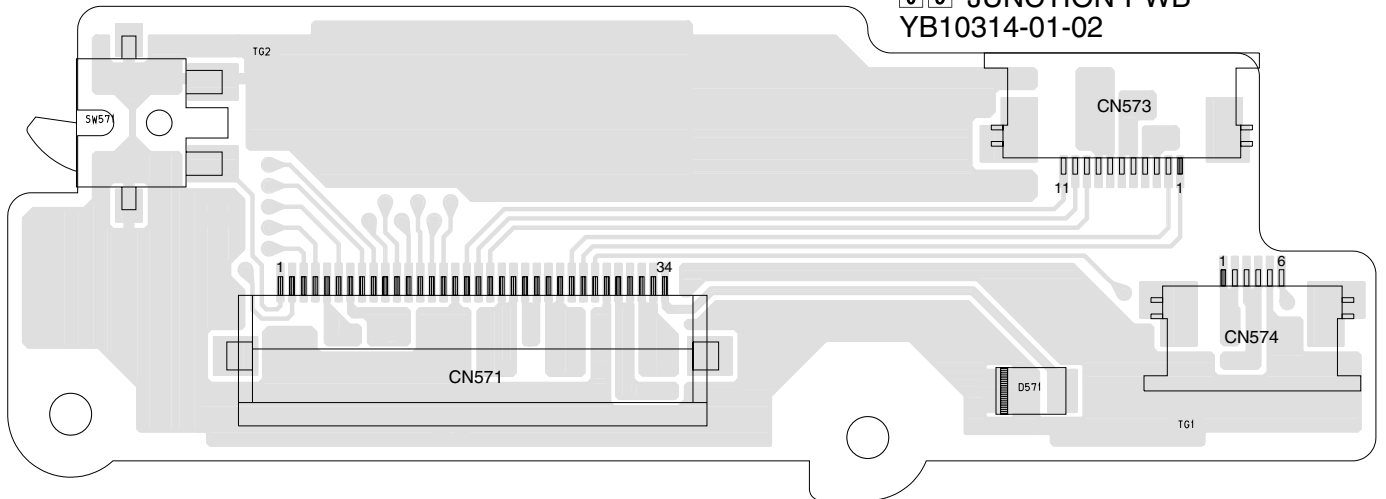
FOIL SIDE(B)

05 JUNCTION PWB  
YB10314-01-02



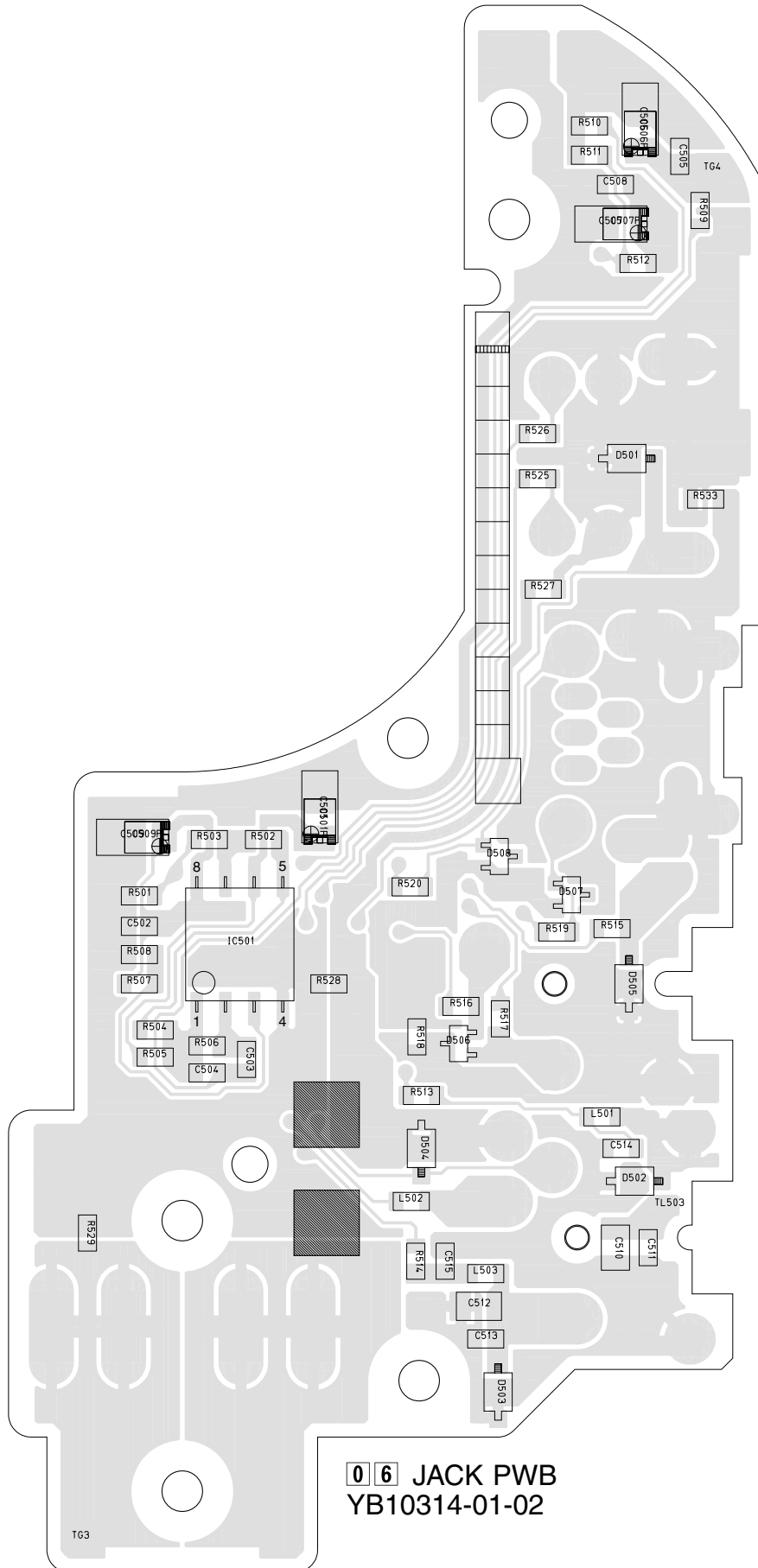
COMPONENT SIDE(A)

05 JUNCTION PWB  
YB10314-01-02

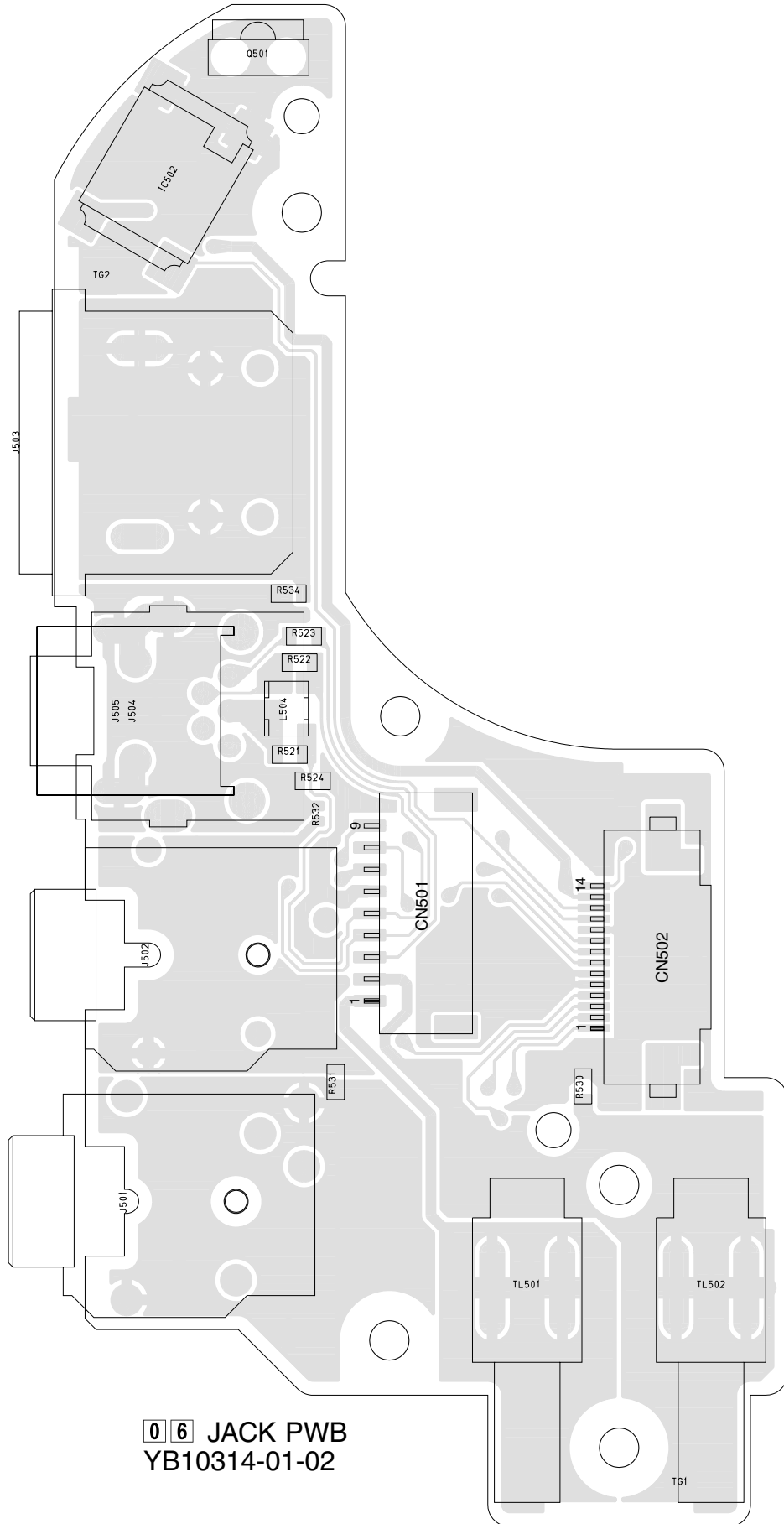


# 4.4 JACK CIRCUIT BOARD

FOIL SIDE(B)



COMPONENT SIDE(A)



06 JACK PWB  
YB10314-01-02